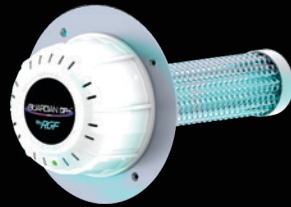


REME HALO™ or Reflective Electro Magnetic Energy utilizes an electromagnetic energy cell to create ionized hydro peroxides™, a friendly oxidizer plasma made from oxygen and humidity. This air purifying plasma is propelled into the HVAC duct or plenum by a silent plasma propulsion module that has no moving parts, yet propels the plasma at 2 cfm. This provides for fan or blower-less operation on a 24-hour basis. The purifying plasma will be propelled through the ducts whether the fan or blower is on or not.



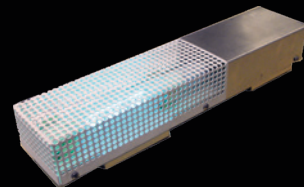
The GUARDIAN AIR QR+™ by RGF Environmental Group is designed to help eliminate sick building syndrome risks by reducing odors, air pollutants, and cold and virus causing germs through a patent-pending Photohydroionization® (PHI) process. The PHI Cells are easily mounted into existing air conditioning and heating systems. When the HVAC system is in operation, the PHI Cell uses an Advanced Oxidation Process to reduce airborne contaminants.



The Guardian Air Plug In Natural Air Purification System provides bacteria, mold, odor and VOCs (chemical odors) reduction. The advantage of the Guardian Air Plug In is its ability to be used in any room and be completely inconspicuous. The Guardian Air Plug In plugs directly into a wall outlet and can be used with or without its internal fan. Because it has its own outlets as part of the unit, you do not lose the wall outlet. The Guardian Air Plug In is an air treatment system not a filter.



The high-quality BLU-QR™ stick light has updated features including our exclusive quick-release lamp, which allows for no tools lamp replacement. It comes standard with four mounting options right in the box, including the easy-to-install magnetic mount and multiple through plate mounting styles. The BLU-QR™ is priced very economically and provides UV light disinfection and protection to the AC coil surfaces from bacteria, virus, mold growth and odors. This results in a cleaner and more efficient energy-saving system.



The Package Unit by RGF features the same technology as the Guardian Air, but is designed to fit into smaller HVAC systems such as roof top package units and anywhere duct work is inaccessible.

DOC# MAN 0500 Rev A

RGF Environmental Group © Copyright 2017

RGF®

ENVIRONMENTAL GROUP, INC.

RGFClear Sky™ DM Ion Generator Air Purification System

RGFCLEAR SKY™ DM



Designed as a low-cost, maintenance free treatment option for in-duct air treatment. The RGFClear Sky™ DM produces high concentrations of both positive and negative ions that will reduce bacteria, mold and particulates. The RGFClear Sky™ DM uses RGF's patent pending continuous self-cleaning technology which utilizes ultra-sonic energy coupled with induced oscillations targeted directly to the carbon ion emitters. The RGFClear Sky™ DM is a 24 VAC input unit that attaches directly to the inside of the air handler. Its small size, easy installation, and low cost make it an ideal alternative to more expensive air purification systems. The DM unit is designed for use within HVAC systems up to 2,400 CFM or 6 tons.

ISO 9001:2015 CERTIFIED COMPANY

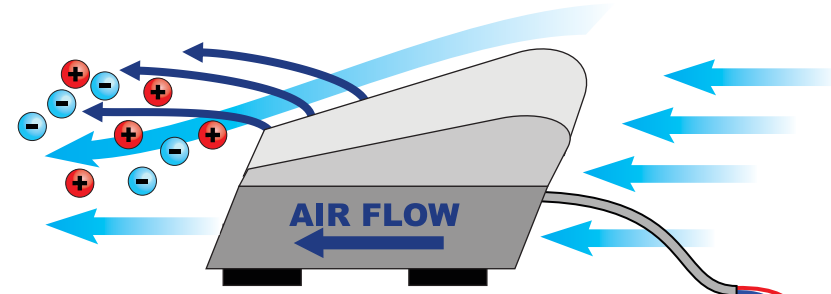
Conforms to:
CAN/CSA C22.2 No.187-M1986
UL-867-2011, EN 60335-1:2012
EN 60335-2-65:2003/A11:2012



© Copyright 2017

Thank you for purchasing the RGFClear Sky™DM by RGF® Environmental Group, Inc.
We are confident this system will provide you with years of fresh, clean air!!!

Efficient ion dispersion and mixing via Bernoulli's effect



MODEL# RGFClear Sky™-DM TO 24 VAC TERMINAL BLOCK
24 VAC 2.5 W OF AIR HANDLER

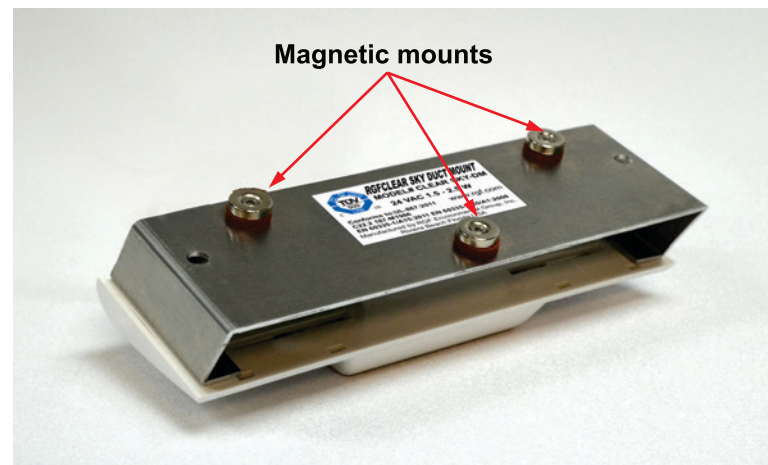
Electrical Connection of RGFClear Sky™DM Unit

WARNING: BE SURE POWER IS DISCONNECTED FROM HVAC UNIT BEFORE ATTEMPTING TO CONNECT RGFClear Sky™DM UNIT TO POWER SOURCE

RGF suggests a licensed technician make connection of power to the RGFClear Sky™DM unit. The RGFClear Sky™DM should be connected to the 24 VAC terminal of the air handler.

Mounting RGFClear Sky™DM Unit

The RGFClear Sky™DM is designed to be mounted via magnetic feet to inside of the air handler. The magnetic feet articulate so the unit can be mounted to a curved surface such as a blower housing.



See included warranty registration card for warranty information

The RGFClear Sky™DM should be mounted in the air flow of the blower and in the direction indicated by the arrow on the side of the metal bracket.



In cases where the RGFClear Sky™DM unit must be mounted to a non-metallic surface, the magnetic feet can be removed and replaced with supplied double-sided tape. Please ensure both surfaces are clean by using supplied alcohol swab.



RGFClear Sky™DM mounted to blower housing

Note: To confirm the RGFClear Sky™DM is operating, RGF suggests use of a non-contact analog voltage tester. When the RGFClear Sky™DM is producing ions the voltage tester will light when held in close proximity to the unit.